

# ACTIVE sit-stand desks



## FEATURES

- Telescopic frame
- Equipped with two motors
- Column type – DOWN version
- Two types of lifting columns with anti-collision
- Three types of feet
- Two types of height adjustment buttons

## QUALITY STANDARD

- IEC 60335-1:2010
- EN 61000-3-2:2006, -A1:2009, -A2:2009
- EN 61000-3-2:2014
- EN 61000-3-3:2008
- EN 61000-4-2, -3, -4, -5, -6, -11 LST EN 527-1:2011
- EN 61000-6-2:2005
- EN 61000-6-3:2007
- EN55014-1:2016+A1:2009+A2:2011
- EN55014-1:1997+A1:2001+A2:2008

## GUARANTEE

- 5 years

## TECHNICAL INFORMATION

### Desktop

- 25 mm MFC (melamine) with 2 mm ABS edging;
- With or without a cut-out for grommet and wire management;
- With or without a scallop for wire management.

### Desk control button types

- JA – up and down drive; 2 memory positions;
- PA – up and down drive, 2 memory positions and screen that shows current height.



JA

PA

### Types of feet



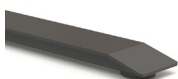
#### Type I

- Metal tube – 700x70x20 mm;
- Height levelling plastic feet (+10 mm);
- Powder coated metal, matches the colour of frame.



#### Type Q

- Metal sheet 700x80x31 mm with welded profile for stability;
- Height levelling plastic feet (+10 mm);
- Powder coated metal, matches the colour of frame.



#### Type Z

- Metal tube – 700x75x31 mm with welded profile for stability;
- Height levelling plastic feet (+10 mm);
- Powder coated metal, matches the colour of frame.

### Adjustable telescopic frame

- Square steel pipe dimensions: 50x25x551 mm
- Side support steel L shape 62x20x520 mm
- Adjustment range - 600 mm;
- Steel pipe part for adjustment - 40x20x870 mm;
- Powder coated metal, matches the colour of columns and feet.

### Lifting columns

- Types: two (2) or three (3) level columns;
- Anti-collision feature;
- Two motors;
- Soft start and soft stop;
- Lifting speed: up to 40 mm/ sec;
- Stroke length: 470 mm (two (2) level column) / 650 mm (three (3) level column);
- Rectangular tube dimensions: two (2) level column 50x70, 60x80 mm, three (3) level column 40x60, 50x70, 60x80 mm;
- Lifting capacity: 100 kg;
- Glide system solution prevents desk columns from possible paint scratches;
- Powder coated metal, matches the colour of frame and feet.



Two (2) level column



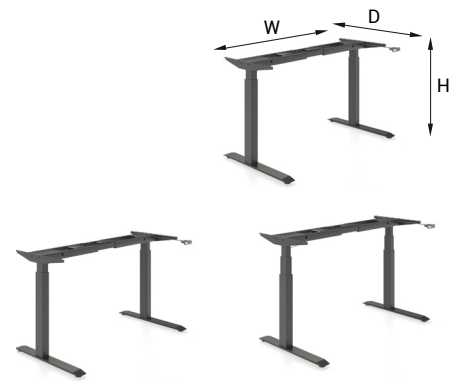
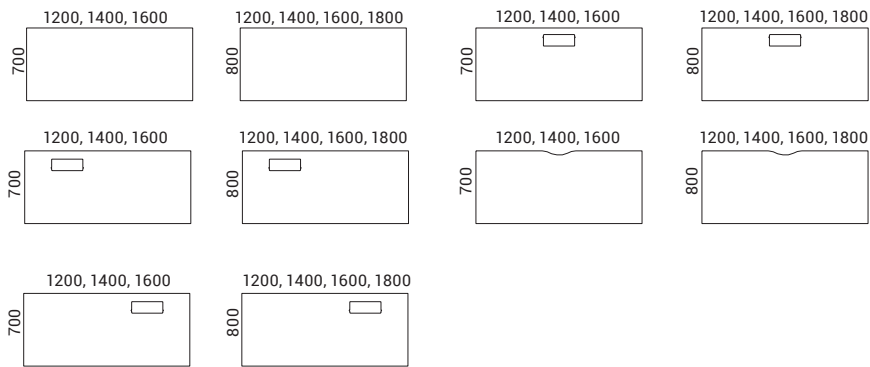
Three (3) level column

## ELECTRICAL SPECIFICATION

### Electronic data power unit

- Input: 110-240 V;
- Frequency: 50/60 Hz;
- Output: Button JA 29V, Button PA 35V
- Power Plug: 2-pol; EU, UK, CH, US;
- Energy consumption in standby mode: button JA 0,5W, button PA 0,2W;
- Operating Cycle: 1 minute on, 9 minutes off.

RANGE



W 1146/1346/1546/1746    W 1146/1346/1546/1746  
 D 700    D 700  
 H 698-1168    H 617-1267

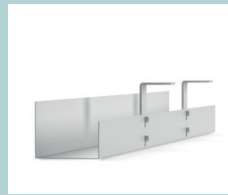
Must be ordered

(for desktops with cut-out)



Metal grommet:  
 317x119 mm, H=27 mm

Optional



Cable trays



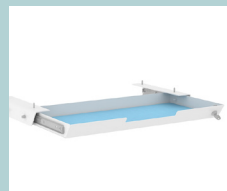
Power socket blocks



Cable ducts



Screens



Felt-lined metal  
 drawer with lock